

Configuration multitâche minimaliste avec Mint + MyAES + Teradesk pour Hatari sans disque dur virtuel à partir d'un dossier de la machine hôte. Mint ne possède aucune configuration ni module à charger.

Minimal multitask configuration for Hatari with Mint, MyAES and Teradesk, starting from host folder. Mint not load any extension or configuration in this case.

<http://sparemint.org/sparemint/>

<http://myaes.lutece.net>

<http://solair.eunet.rs/~vdjole/teradesk.htm>

Olivier Landemarre

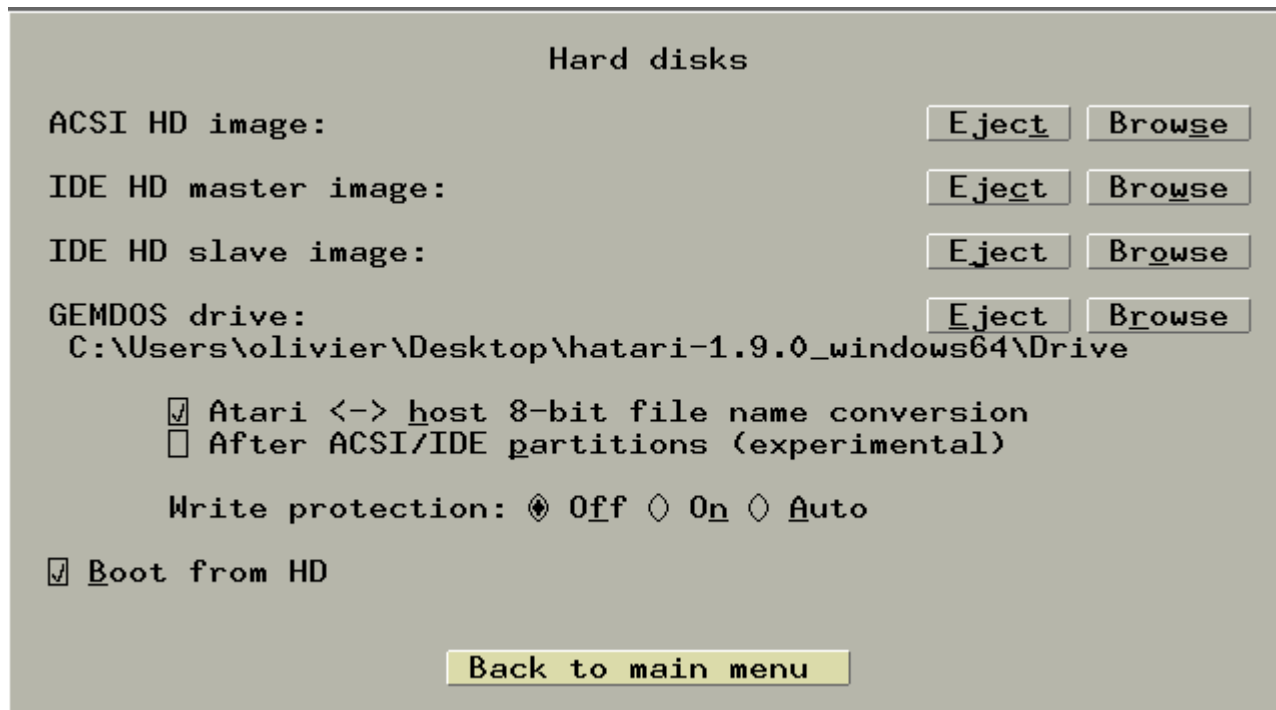
Configuration disque / drive configuration:

Dans Hatari

- sélectionner le dossier « Drive » fourni, comme « GEMDOS drive »
- Sélectionner l'option « Boot from HD »

In Hatari

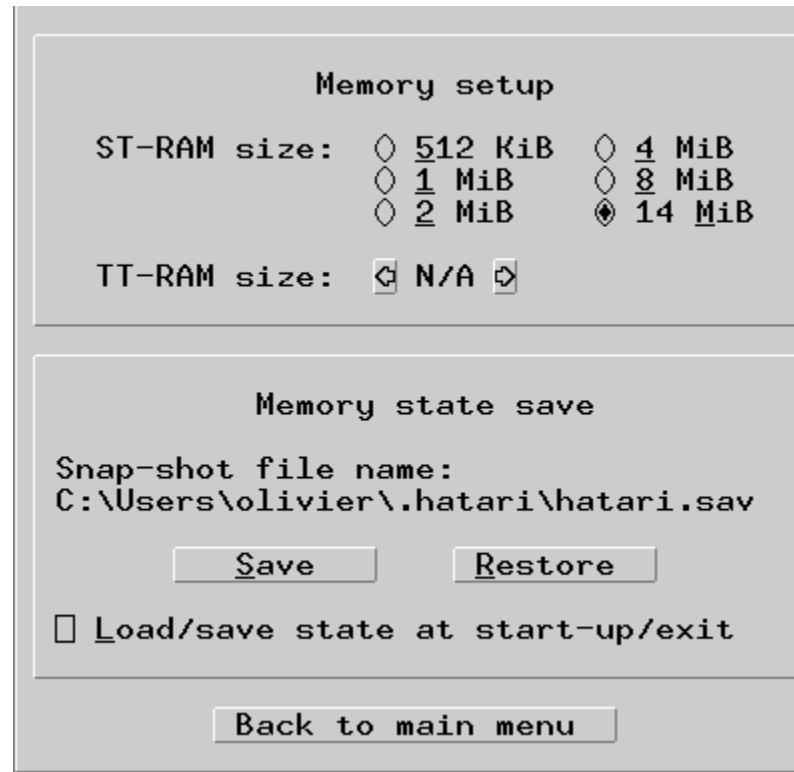
- Select the « drive » folder from this archive as « GEMDOS drive »
- Select « boot from HD » option



Configuration Mémoire / Memory configuration

Choisir 14Mo de mémoire ou plus (4Mo encore suffisant mais le windframe ne se charge plus et il ne reste que 1.4Mo!)

Choose 14MiB or more of memory (4 MiB is possible but windframe don't load and it will stay 1.4MiB memory free!)



The screenshot shows a 'Memory setup' window with two main sections. The first section, 'Memory setup', contains two rows of memory size options. The first row is for 'ST-RAM size' with options: 512 KiB, 4 MiB, 1 MiB, 8 MiB, 2 MiB, and 14 MiB (selected). The second row is for 'TT-RAM size' with a single option: N/A. The second section, 'Memory state save', contains a text field for 'Snap-shot file name:' with the value 'C:\Users\olivier\hatari\hatari.sav'. Below this are two buttons: 'Save' and 'Restore'. At the bottom of the window is a button labeled 'Back to main menu'.

Memory setup

ST-RAM size: ☐ 512 KiB ☐ 4 MiB
☐ 1 MiB ☐ 8 MiB
☐ 2 MiB ☒ 14 MiB

TT-RAM size:

Memory state save

Snap-shot file name:
C:\Users\olivier\hatari\hatari.sav

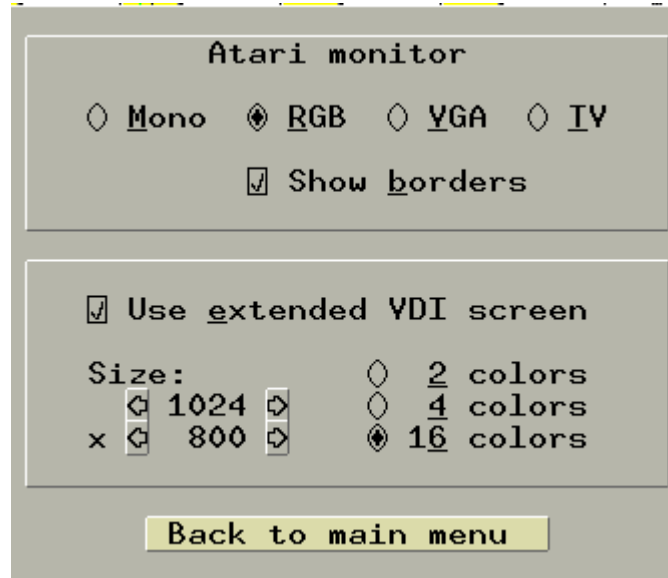
☐ Load/save state at start-up/exit

Configuration écran Atari / Atari screen configuration:

N'importe quelle résolution écran est possible (possible erreurs de dessin en ST mid et ST Low). 640x400 ou plus est préférable (Yopla ne dessine pas bien en delà)

Si vous avez un clavier Français éditer le fichier gemsys/myaes/myaes.cnf et rechercher « language » et mettre la valeur 2

Any screen resolution is possible (some issues possible in ST mid and ST Low). 640*400 or more is better (Yopla issue with less)



The image shows a screenshot of a configuration menu titled "Atari monitor". It features several options with radio buttons and checkboxes. The first section contains "Mono", "RGB" (selected), "VGA", and "IV". Below this is a checked checkbox for "Show borders". The second section contains a checked checkbox for "Use extended VDI screen". Under "Size:", there are two rows of options: "1024" and "800" for width, and "2 colors", "4 colors", and "16 colors" for height. The "16 colors" option is selected. At the bottom, there is a yellow button labeled "Back to main menu".

Atari monitor

☐ Mono ☒ RGB ☐ VGA ☐ IV

☒ Show borders

☒ Use extended VDI screen

Size:

☐ 2 colors ☐ 4 colors ☒ 16 colors

Back to main menu